

# 2019 Garbage, Recycling & Food Waste Collection Schedule

## Route RA-2

2 Year  
Schedule

### Important Schedule Information

The collection schedule is based on an add-a-day system where the collection day advances after a statutory holiday.



REGULAR CONTAINER  
100 litres maximum

LARGE CONTAINER  
121 litres

TAKE YOUR CONTAINERS TO THE CURB BY 8 AM ON YOUR SCHEDULED COLLECTION DAY

#### Inside your GARBAGE can:

- 100 litres (22 gallons) garbage per can – larger cans can be used but not filled to the top (see diagram fill limits).
- 23 kg (50 lbs) maximum per can – for the safety of the driver.
- **If you have trouble picking it up, so will your driver,** and remember he/she has to pick up hundreds of cans per day.
- No food waste (use your green bin).
- No construction or renovation waste.
- No yard waste.
- No items larger than 2 feet in any dimension.
- One container every other week. Extra containers must have a single-use Extra Garbage Tag attached.
- A maximum of two extra bags/containers with tags.

### Green Bin Basics USING YOUR GREEN BIN



1. Use your green bin to store food waste. Place large soiled compostable paper products such as pizza boxes directly in the green bin.
2. Keep the lid securely latched to help control odours and keep out rodents and other animals.
3. Store your green bin in a cool, ventilated location, like where you keep your garbage can.
4. Take your green bin to the curb before 8 A.M. on your collection day even if it is not full.

### LINING YOUR CONTAINERS

For convenience and cleanliness you can line your kitchen container or green bin. If you use a bag, make sure it is compostable.

Liner bags must have certified 'compostable' logo.

Approved compostable bags designed to breakdown in a composting facility are sold at most major grocery and hardware stores and other retailers throughout the region.

Plastic, biodegradable or oxy-degradable bags are not accepted.



### NEW AND REPLACEMENT GREEN BINS

If you are new to the area and need a green bin, or if an older bin has become damaged and unusable, new green bins can be purchased from the following locations:

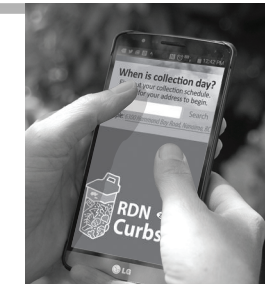
**RDN**  
Administration office  
6300 Hammond Bay Road, Nanaimo  
Regional Landfill  
1105 Cedar Road, Nanaimo  
Church Road Transfer Station  
860 Church Road, Parksville  
**Waste Connections of Canada**  
1151 Herring Gull Way, Parksville

**Qualicum Beach**  
Town Hall  
201-660 Primrose St  
**Lantzville**  
Municipal Hall  
7192 Lantzville Road  
**Gabriola**  
Gabriola Island Recycling Organization  
700 Tin Can Alley

### Collection Day Confusion?

Visit [www.rdn.bc.ca/curbside](http://www.rdn.bc.ca/curbside)

- **Sign up for** personalized reminders via email, phone call, or twitter
- **Import your personalized collection schedule** to your online iCal, Outlook or Google Calendar
- **View, download or print** your personalized collection schedule
- **Download our RDN curbside app** for collection day reminders and a 'What Goes Where' tool to find out what if an items goes into your blue bin, green bin, garbage or back to a depot.



S	M	T	W	T	F	S
		1	2	3	4	5
6	7	8	9	10	11	12
13	14	15	16	17	18	19
20	21	22	23	24	25	26
27	28	29	30	31		

S	M	T	W	T	F	S
					1	2
3	4	5	6	7	8	9
10	11	12	13	14	15	16
17	18	19	20	21	22	23
24	25	26	27	28		

S	M	T	W	T	F	S
					1	2
3	4	5	6	7	8	9
10	11	12	13	14	15	16
17	18	19	20	21	22	23
24	25	26	27	28	29	30
31						

S	M	T	W	T	F	S
	1	2	3	4	5	6
7	8	9	10	11	12	13
14	15	16	17	18	19	20
21	22	23	24	25	26	27
28	29	30				

S	M	T	W	T	F	S
			1	2	3	4
5	6	7	8	9	10	11
12	13	14	15	16	17	18
19	20	21	22	23	24	25
26	27	28	29	30	31	

S	M	T	W	T	F	S
					1	
2	3	4	5	6	7	8
9	10	11	12	13	14	15
16	17	18	19	20	21	22
23	24	25	26	27	28	29
30						

S	M	T	W	T	F	S
	1	2	3	4	5	6
7	8	9	10	11	12	13
14	15	16	17	18	19	20
21	22	23	24	25	26	27
28	29	30	31			

S	M	T	W	T	F	S
					1	2
4	5	6	7	8	9	10
11	12	13	14	15	16	17
18	19	20	21	22	23	24
25	26	27	28	29	30	31

S	M	T	W	T	F	S
		1	2	3	4	5
8	9	10	11	12	13	14
15	16	17	18	19	20	21
22	23	24	25	26	27	28
29	30					

S	M	T	W	T	F	S
		1	2	3	4	5
6	7	8	9	10	11	12
13	14	15	16	17	18	19
20	21	22	23	24	25	26
27	28	29	30	31		

S	M	T	W	T	F	S
					1	2
3	4	5	6	7	8	9
10	11	12	13	14	15	16
17	18	19	20	21	22	23
24	25	26	27	28	29	30

S	M	T	W	T	F	S
				1	2	
8	9	10	11	12	13	14
15	16	17	18	19	20	21
22	23	24	25	26	27	28
29	30	31				

◇ GARBAGE & FOOD WASTE   ○ RECYCLING & FOOD WASTE   □ STATUTORY HOLIDAY

Please take your containers to the curb by 8 AM on your scheduled collection day

2018  
over >



#### CONTACT INFORMATION

#### Missed collections or scheduling information

Waste Connections of Canada  
1-866-999-8227

#### RDN Solid Waste Services

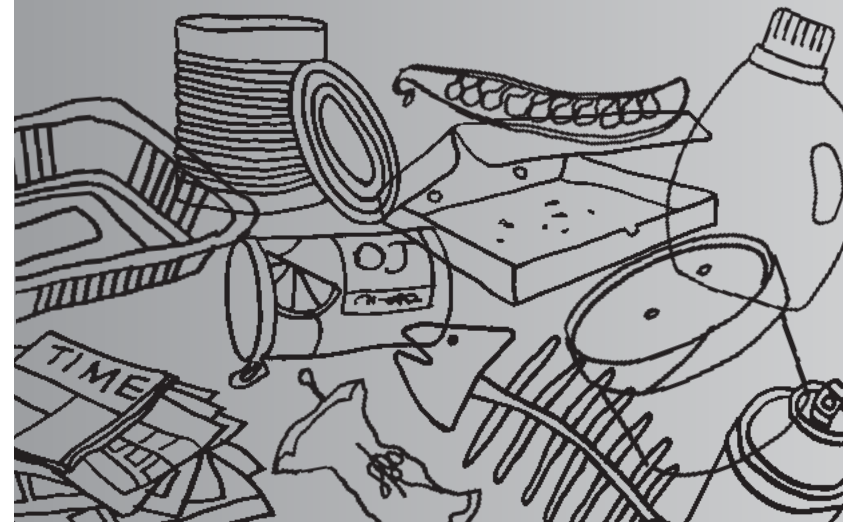
250-390-6560 (RDN District 68 area)  
250-954-3792 (RDN District 69 area)  
6300 Hammond Bay Rd,  
Nanaimo, BC V9T 6N2

Email: [zerowaste@rdn.bc.ca](mailto:zerowaste@rdn.bc.ca)

Website: [www.rdn.bc.ca/curbside](http://www.rdn.bc.ca/curbside)

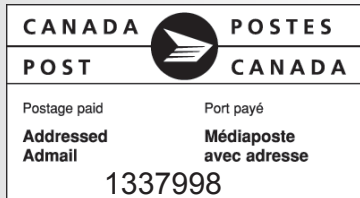
Replacement schedules Online: [www.rdn.bc.ca/curbside](http://www.rdn.bc.ca/curbside)

# REGIONAL DISTRICT OF NANAIMO 2018/2019 Garbage, Recycling & Food Waste Collection Calendar



## ROUTE RA-2

RETURN ADDRESS:  
RDN Solid Waste Services  
6300 Hammond Bay Road  
Nanaimo, BC V9T 6N2



## Inside Your Green Bin

FOOD WASTE INCLUDING:

- Bones
- Bread, cereal, grains
- Coffee grounds, filters, tea bags
- Fruit and vegetable scraps
- Meat, fish/seafood, poultry
- Pasta, rice
- Houseplants, cut and dried flowers

### SOILED PAPER

- Paper towels and tissues
- Paper plates
- Paper food packaging (not plastic lined)
- Waxed paper, parchment paper
- Waxed ice cream, milk and cream containers

### REMEMBER TO:

Rinse your green bin frequently to avoid odours

If you are lining your bin, use newspaper or purchase compostable bags (must have certified compostable logo)

## DO NOT INCLUDE IN CURBSIDE RECYCLING

- Plastic bags or plastic packaging wrap
- Foam packaging (Styrofoam)
- Glass containers
- Bubble wrap
- Aerosol cans that contained paint, waxes, polishes, lubricants, solvents, pesticides or hazardous wastes

## Inside Your Blue Box

CONTAINER RECYCLABLES:

- Aseptic (Tetra Pak) boxes and cartons, e.g., soups, sauces
- Paper-based Microwavable bowls and cups
- Metal cans and lids
- Aerosol cans (empty) and caps e.g. food, air freshener, shaving cream, deodorant, hairspray
- Spiral wound paper cans and lids
- Aluminum foil wrap, aluminum take-out and baking containers
- Plastic - bottles, jugs, jars, caps, lids, clamshells and cold drink cups
- Plastic garden plant pots and seedling trays
- Plastic pails, containers e.g., for laundry detergent, ice cream, must be less than 25L

## Beside Your Blue Box

- Cardboard and Shredded Paper

### REMEMBER TO:

Flatten large corrugated boxes and tie in bundles no larger than 8" thick (20 cm) X 30" wide (78 cm) X 30" tall (78 cm); staples and tape accepted

Place shredded paper in a tied clear plastic bag (no opaque, coloured or black bags)

- Motor oil, lubricants, wax, solvents, flammable product, or paint containers
- Metal pots, coat hangers, scrap metal or appliances
- Chip or foil bags, blister packs, e.g., medicine and/or gum packaging
- Textiles
- Hardcover or paperback books

## Inside Your Yellow Bag

PAPER RECYCLABLES:

- Newspapers, inserts, flyers, catalogues, magazines, telephone books
- Household paper, envelopes, paper gift wrap, greeting cards
- Boxboard boxes, cereal, pizza boxes
- Frozen dessert containers, e.g., ice cream
- Dairy containers
- Multi layered bags for pet food, flour, sugar etc.

### REMEMBER TO:

- Empty boxboard boxes of leftover food and remove plastic/paper liners
- Empty/rinse paper food containers

**Can't find an item?**  
Check the What Goes Where? feature in RDN Curbside App.  
Or go to [rdn.bc.ca/curbside](http://rdn.bc.ca/curbside)

### TAKE TO DROP-OFF DEPOTS

- Glass containers
- Plastic bags and plastic packaging
- Foam packaging (Styrofoam)
- Small appliances
- Aerosol cans that contained paint, solvents, pesticides
- Motor oil, solvents, flammable products, paint containers, batteries

- Non paper gift wrap, e.g., foil, ribbons or bows; musical greeting cards with batteries
- Padded envelopes
- Foil or foil-lined paper and bags, e.g., for cookies and some pet food
- Straws
- Prescriptions or over the counter medicine

# 2018 Garbage, Recycling & Food Waste Collection Schedule

## Route RA-2

### January 2018

S	M	T	W	T	F	S
	1	2	3	4	5	6
7	8	9	10	11	12	13
14	15	16	17	18	19	20
21	22	23	24	25	26	27
28	29	30	31			

### February

S	M	T	W	T	F	S
				1	2	3
4	5	6	7	8	9	10
11	12	13	14	15	16	17
18	19	20	21	22	23	24
25	26	27	28			

### March

S	M	T	W	T	F	S
				1	2	3
4	5	6	7	8	9	10
11	12	13	14	15	16	17
18	19	20	21	22	23	24
25	26	27	28	29	30	31

### April

S	M	T	W	T	F	S
1	2	3	4	5	6	7
8	9	10	11	12	13	14
15	16	17	18	19	20	21
22	23	24	25	26	27	28
29	30					

### May

S	M	T	W	T	F	S
		1	2	3	4	5
6	7	8	9	10	11	12
13	14	15	16	17	18	19
20	21	22	23	24	25	26
27	28	29	30	31		

### June

S	M	T	W	T	F	S
					1	2
3	4	5	6	7	8	9
10	11	12	13	14	15	16
17	18	19	20	21	22	23
24	25	26	27	28	29	30

### July

S	M	T	W	T	F	S
1	2	3	4	5	6	7
8	9	10	11	12	13	14
15	16	17	18	19	20	21
22	23	24	25	26	27	28
29	30	31				

### August

S	M	T	W	T	F	S
			1	2	3	4
5	6	7	8	9	10	11
12	13	14	15	16	17	18
19	20	21	22	23	24	25
26	27	28	29	30	31	

### September

S	M	T	W	T	F	S
						1
2	3	4	5	6	7	8
9	10	11	12	13	14	15
16	17	18	19	20	21	22
23	24	25	26	27	28	29
30						

### October

S	M	T	W	T	F	S
	1	2	3	4	5	6
7	8	9	10	11	12	13
14	15	16	17	18	19	20
21	22	23	24	25	26	27
28	29	30	31			

### November

S	M	T	W	T	F	S
				1	2	3
4	5	6	7	8	9	10
11	12	13	14	15	16	17
18	19	20	21	22	23	24
25	26	27	28	29	30	

### December

S	M	T	W	T	F	S
						1
2	3	4	5	6	7	8
9	10	11	12	13	14	15
16	17	18	19	20	21	22
23	24	25	26	27	28	29
30	31					

◇ GARBAGE & FOOD WASTE    ○ RECYCLING & FOOD WASTE    □ STATUTORY HOLIDAY

Please take your containers to the curb by 8 AM on your scheduled collection day



**CONTACT INFORMATION**

**Missed collections or scheduling information**  
Waste Connections of Canada  
1-866-999-8227

**RDN Solid Waste Services**  
250-390-6560 (RDN District 68 area)  
250-954-3792 (RDN District 69 area)  
6300 Hammond Bay Rd,  
Nanaimo, BC V9T 6N2

Email: [zerowaste@rdn.bc.ca](mailto:zerowaste@rdn.bc.ca)  
Website: [www.rdn.bc.ca/curbside](http://www.rdn.bc.ca/curbside)

Replacement schedules Online: [www.rdn.bc.ca/curbside](http://www.rdn.bc.ca/curbside)

**2019 over >**